



 **ASTRIA**
DEVELOPMENTS

KEFALARI MAISONETTE M8



570m²

DESCRIPTION

Maisonette M8 is a residence forming part of a complex of eight newly renovated maisonettes situated in the Kefalari part of Kifissia. Originally constructed in 2012, the house has been tastefully restored and renovated to create a residence that is modern and perfectly suited to the needs of the multi-generational or growing family.

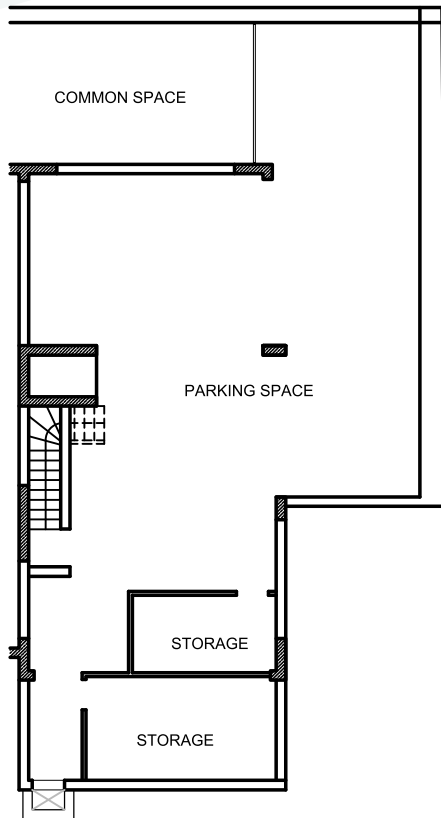
With spacious open-plan living space, six bedrooms with verandas, underground parking and plenty of natural light, this maisonette is the perfect base for discerning families and homeowners who want to enjoy all the joy and advantages of living in Kifissia.

In addition to owner occupation, the maisonette is perfectly suited as a rental or investment property, being in an area that is highly popular with families and close to international schools.

HIGHLIGHTS

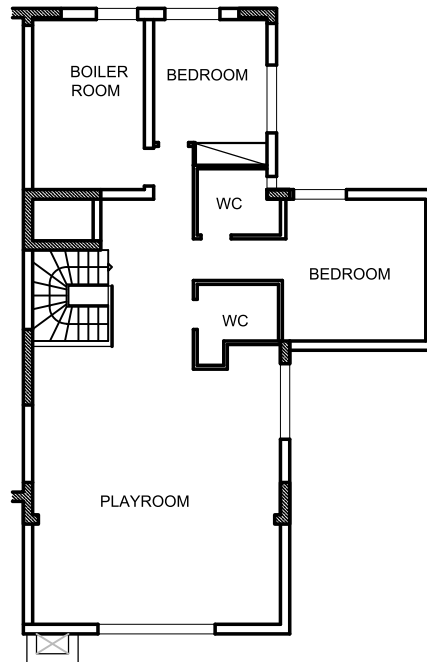
- 6 bedrooms, including one en-suite
- Elevator
- Wooden floors throughout
- Secure garage parking for 2-3 cars
- Open plan living room
- Modern kitchen and bathrooms
- Playroom
- Storage
- Fireplace
- Garden
- Multiple verandas and light throughout
- Double-glazed windows
- Autonomous heat pumps

FLOOR PLAN M8

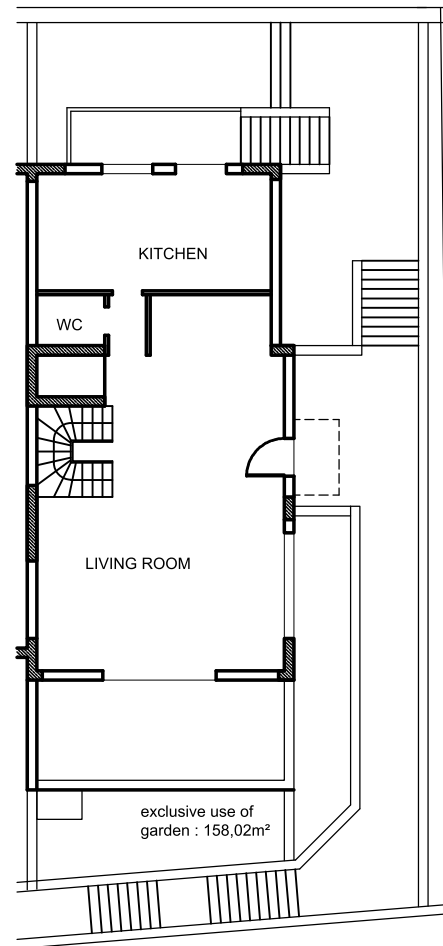


BASEMENT B : 171.61 m²

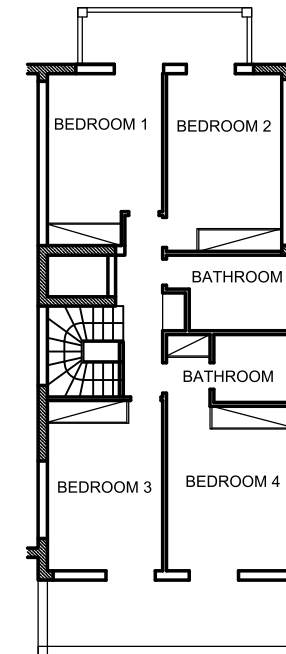
MAISONETTA 8 : 571.99 m²



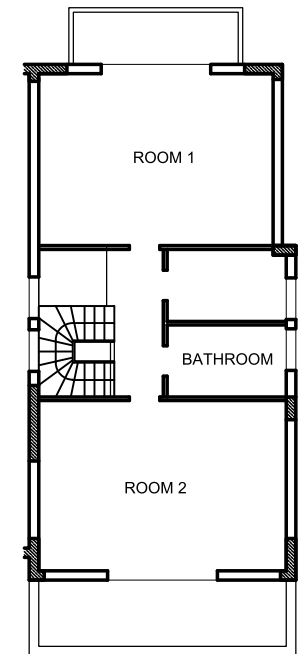
SEMI-BASEMENT: 129.43 m²



GROUND FLOOR: 92.92 m²



FIRST FLOOR : 92.92 m²



LOFT: 85.11 m²



For further information, contact:

info@astria.gr
www.astria.gr

Whilst all the information in these particulars are believed to be correct, Astria Developments does not guarantee its accuracy nor is it intended to form part of any contract. All areas quoted are approximate. All rights reserved © 2024.